



Instituto Tecnológico de Salina Cruz

Fundamentos de Redes

Semestre enero – julio 2015

Reporte de Practica

Practica nº 1

Unidad 2

Objetivo:

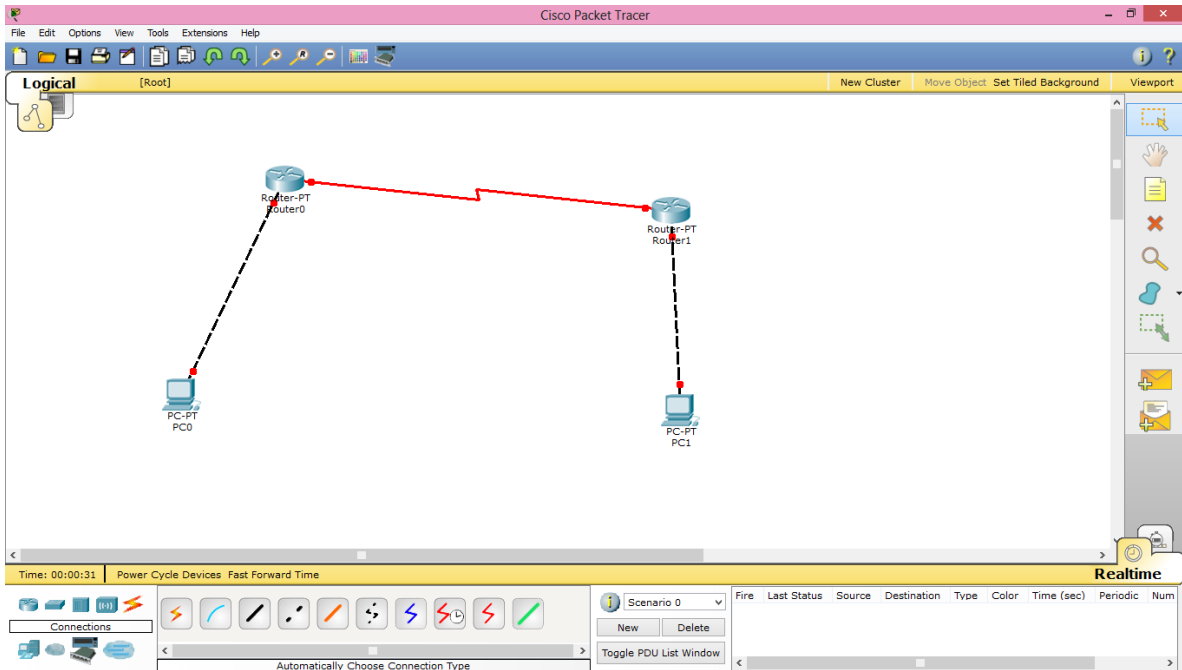
Identificar el enrutamiento estático y dinámico, además de aplicar el enrutamiento estático a una red WAN.

Instrucciones:

- 1.- Cambiar de nombre a los dispositivos.
- 2.- configurar banner a ambos router's.
- 3.- levantar los puertos fa0 a ambos routers.
- 4.- levantar los seriales de ambos routers.

Materiales:

- 1.- computadora.
- 2.- Packet tracet.



The screenshot shows the configuration window for Router0, specifically the Global Settings tab. The window is titled "Router0" and has tabs for Physical, Config, and CLI. The Global Settings section includes:

- GLOBAL**
 - Settings
 - Algorithm Settings
- ROUTING**
 - Static
 - RIP
- INTERFACE**
 - FastEthernet0/0
 - FastEthernet1/0
 - Serial2/0
 - Serial3/0
 - FastEthernet4/0
 - FastEthernet5/0

The Global Settings section is expanded, showing:

- Display Name: Router0
- Hostname: alfa
- NVRAM: Erase, Save
- Startup Config: Load..., Export...
- Running Config: Merge..., Export...

At the bottom, there is a section for Equivalent IOS Commands with a text area containing:

```

Configure Password configuration dialog? [yes/no]:
Please answer 'yes' or 'no'.
Continue with configuration dialog? [yes/no]: n
Press RETURN to get started!
  
```

Configuración de la contraseña del ruter.

```
Router0
Physical Config CLI
IOS Command Line Interface
63488K bytes of ATA CompactFlash (Read/Write)

--- System Configuration Dialog ---

Continue with configuration dialog? [yes/no]:
% Please answer 'yes' or 'no'.
Continue with configuration dialog? [yes/no]: n

Press RETURN to get started!

Router>enable
Router#
Router#configure terminal
Enter configuration commands, one per line. End with CNTL/Z.
Router(config)#hostname alfa
alfa(config)#
alfa(config)#config terminal
%Invalid hex value
alfa(config)#conf terminal
%Invalid hex value
alfa(config)#enable password azul
alfa(config)#
```

Copy Paste

```
alfa>enable
Password:
alfa#
```

Copy Paste

Configuración del banner.

```
Router0
Physical Config CLI
IOS Command Line Interface

alfa>enable
Password:
alfa#conf t
Enter configuration commands, one per line. End with CNTL/Z.
alfa(config)#banner motd #Redes de Computadoras Eduardo Salazar Irrizari Unidad
2
Enter TEXT message. End with the character '#'.
alfa(config)#banner motd #Redes de Computadoras Eduardo Salazar Irrizari Unidad
2

alfa(config)#exit
alfa#
%SYS-S-CONFIG_I: Configured from console by console
alfa#exit
```

Copy Paste

Después procederemos a levantar el puesto fa0

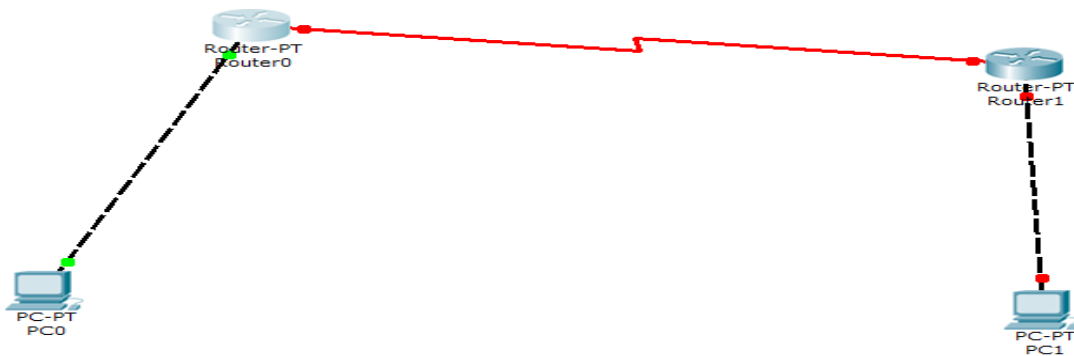
```
Router0
Physical Config CLI
IOS Command Line Interface

Redes de Computadoras Eduardo Salazar Irrizari Unidad 2

banner motd
alfa>enable
Password:
alfa#conf t
Enter configuration commands, one per line.  End with CNTL/Z.
alfa(config)#interface fa0/0
alfa(config-if)#no shut

alfa(config-if)#
%LINK-5-CHANGED: Interface FastEthernet0/0, changed state to up
%LINEPROTO-5-UPDOWN: Line protocol on Interface FastEthernet0/0, changed state to up
alfa(config-if)#
```

Y se muestra en color verde la conexión.



Después debemos levantar los seriales del router.

```
Router0
Physical Config CLI
IOS Command Line Interface

Redes de Computadoras Eduardo Salazar Irrizari Unidad 2

banner motd
alfa>enable
Password:
alfa#conf t
Enter configuration commands, one per line.  End with CNTL/Z.
alfa(config)#interface fa0/0
alfa(config-if)#no shut

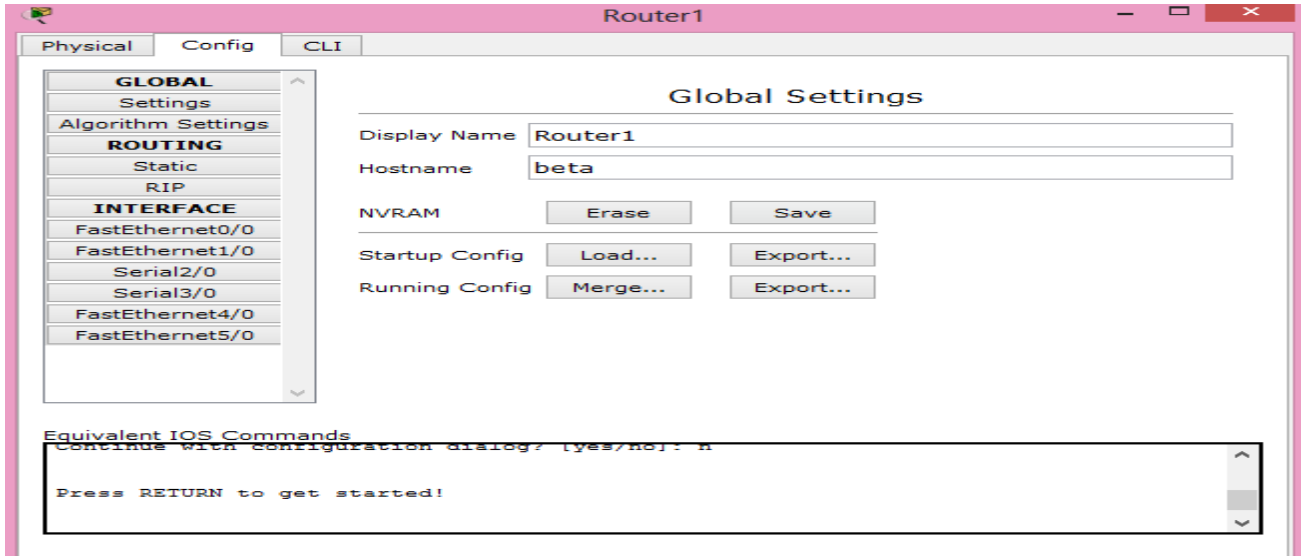
alfa(config-if)#
%LINK-5-CHANGED: Interface FastEthernet0/0, changed state to up
%LINEPROTO-5-UPDOWN: Line protocol on Interface FastEthernet0/0, changed state to up

alfa(config-if)#ip route 192.168.2.0 255.255.255.0 serial2/0
alfa(config)#interface serial2/0
alfa(config-if)#no shut

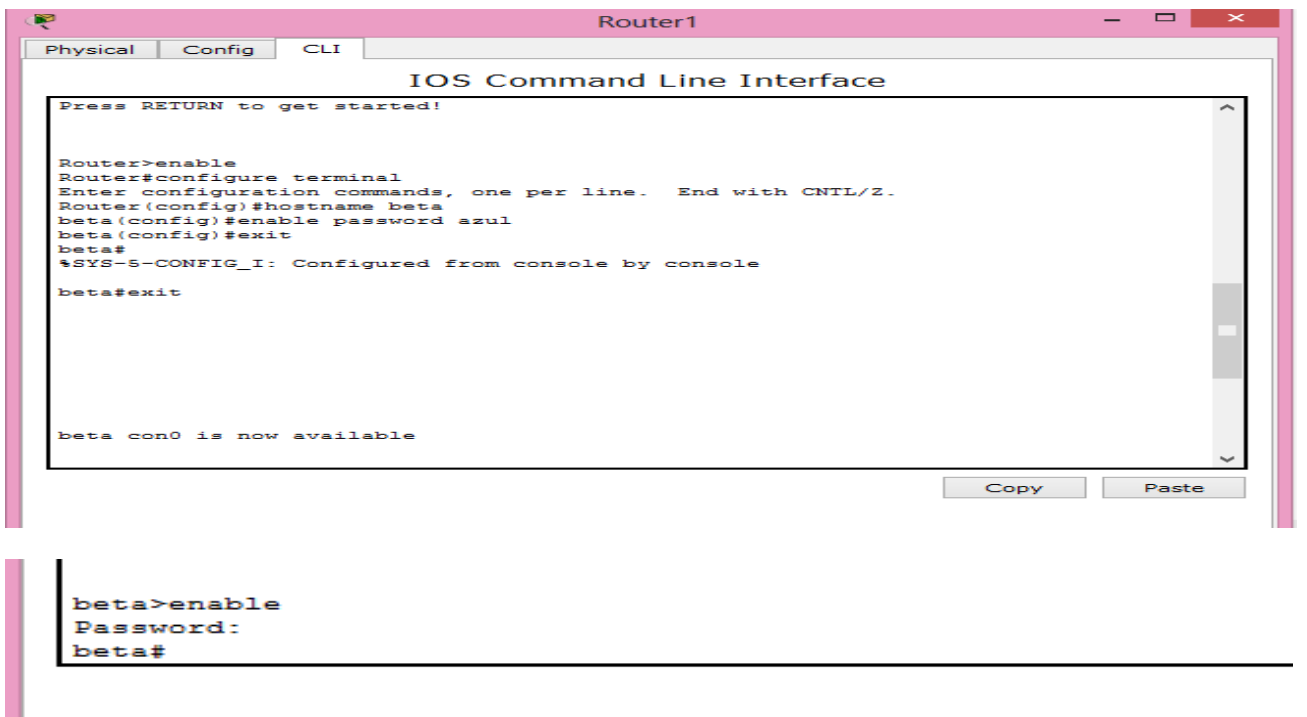
%LINK-5-CHANGED: Interface Serial2/0, changed state to down
alfa(config-if)#
alfa(config-if)#
```

Después de realizarle todo ese rollo al router alfa, es necesario volver a hacer el mismo proceso pero al router beta.

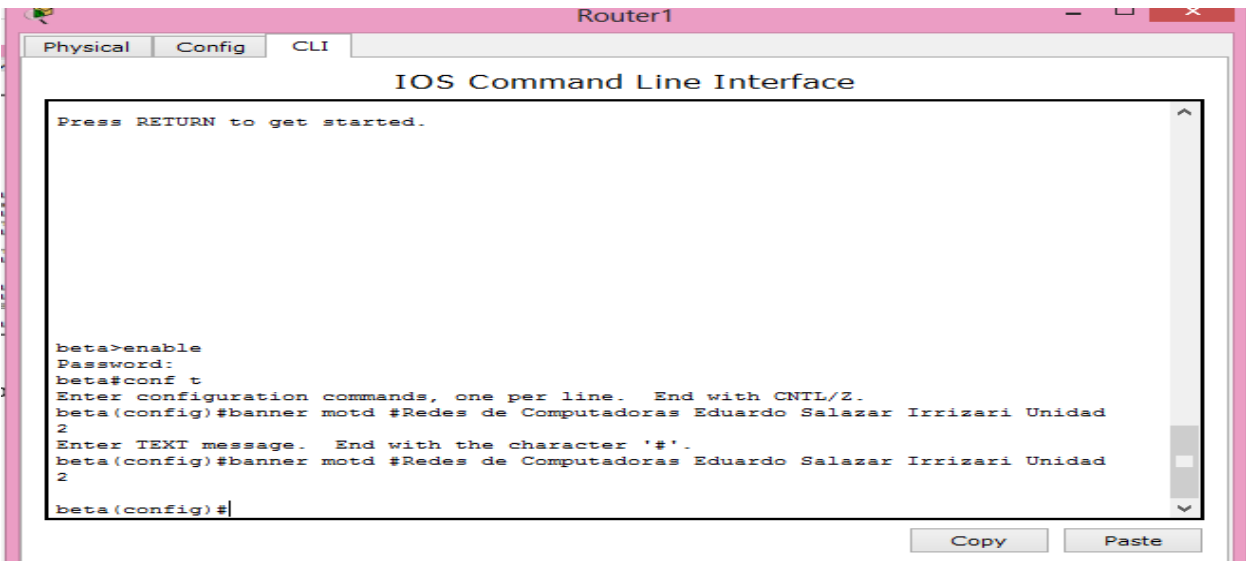
Primero pasamos a cambiarle el nombre del router.



Después le configuramos la contraseña.



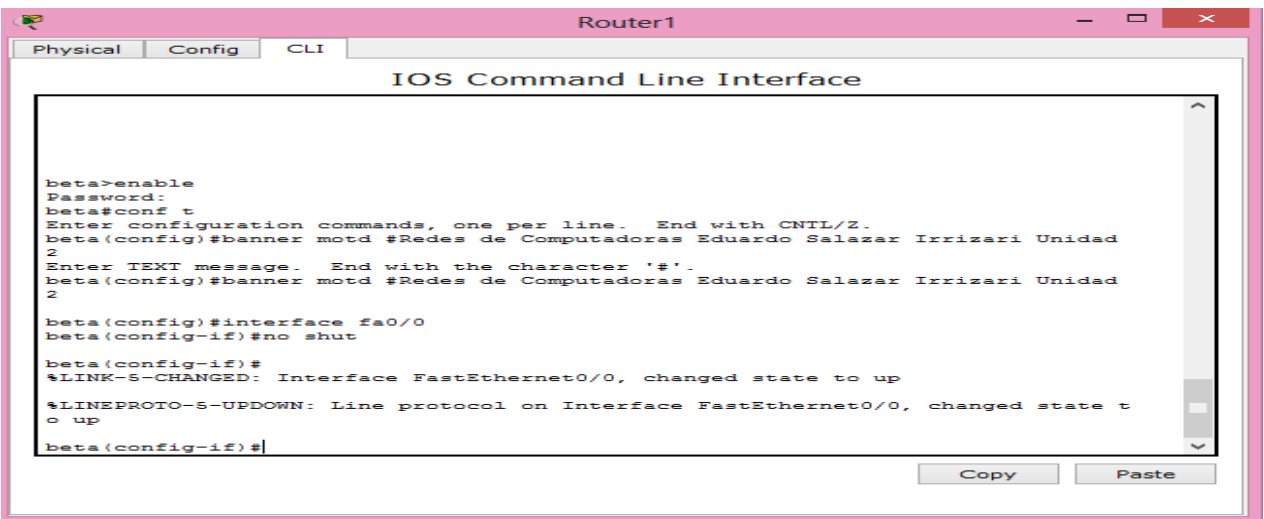
Después se le agrega lo que es el Banner.



```
Router1
Physical Config CLI
IOS Command Line Interface
Press RETURN to get started.

beta>enable
Password:
beta#conf t
Enter configuration commands, one per line. End with CNTL/Z.
beta(config)#banner motd #Redes de Computadoras Eduardo Salazar Irrizari Unidad
2
Enter TEXT message. End with the character '#'.
beta(config)#banner motd #Redes de Computadoras Eduardo Salazar Irrizari Unidad
2
beta(config)#
```

Posteriormente se levanta el puerto fa0.



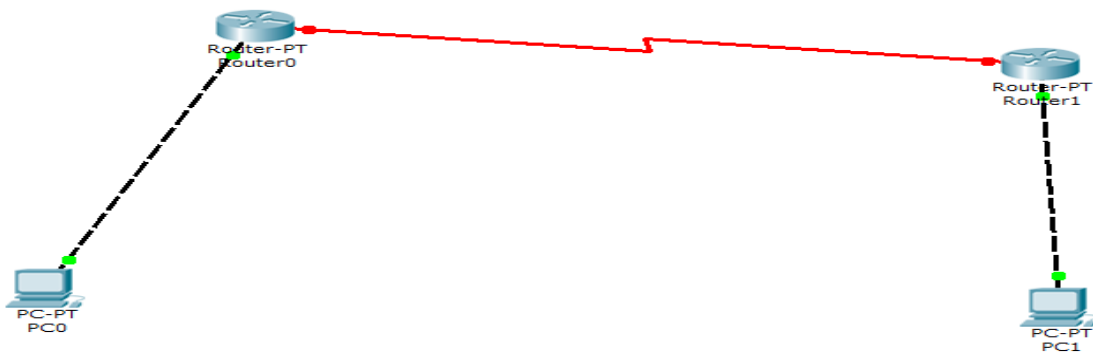
```
Router1
Physical Config CLI
IOS Command Line Interface

beta>enable
Password:
beta#conf t
Enter configuration commands, one per line. End with CNTL/Z.
beta(config)#banner motd #Redes de Computadoras Eduardo Salazar Irrizari Unidad
2
Enter TEXT message. End with the character '#'.
beta(config)#banner motd #Redes de Computadoras Eduardo Salazar Irrizari Unidad
2

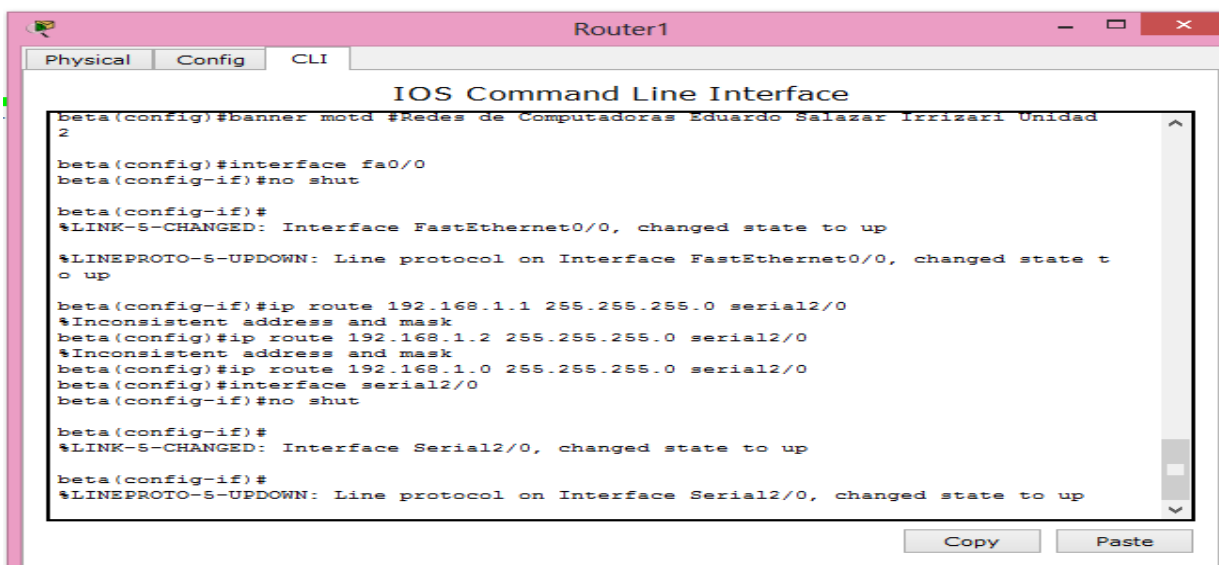
beta(config)#interface fa0/0
beta(config-if)#no shut

beta(config-if)#
%LINK-S-CHANGED: Interface FastEthernet0/0, changed state to up
%LINEPROTO-S-UPDOWN: Line protocol on Interface FastEthernet0/0, changed state to up
beta(config-if)#
```

De ahí se observa que en la maquina cambia de color.



De ahí es necesario levantar los seriales del router.



```
Router1
Physical Config CLI
IOS Command Line Interface
beta(config)#banner motd #Redes de Computadoras Eduardo Salazar Irrizari Unidad
2
beta(config)#interface fa0/0
beta(config-if)#no shut
beta(config-if)#
%LINK-S-CHANGED: Interface FastEthernet0/0, changed state to up
%LINEPROTO-S-UPDOWN: Line protocol on Interface FastEthernet0/0, changed state t
o up
beta(config-if)#ip route 192.168.1.1 255.255.255.0 serial2/0
beta(config)#ip route 192.168.1.2 255.255.255.0 serial2/0
beta(config)#ip route 192.168.1.0 255.255.255.0 serial2/0
beta(config)#interface serial2/0
beta(config-if)#no shut
beta(config-if)#
%LINK-S-CHANGED: Interface Serial2/0, changed state to up
beta(config-if)#
%LINEPROTO-S-UPDOWN: Line protocol on Interface Serial2/0, changed state to up
Copy Paste
```

